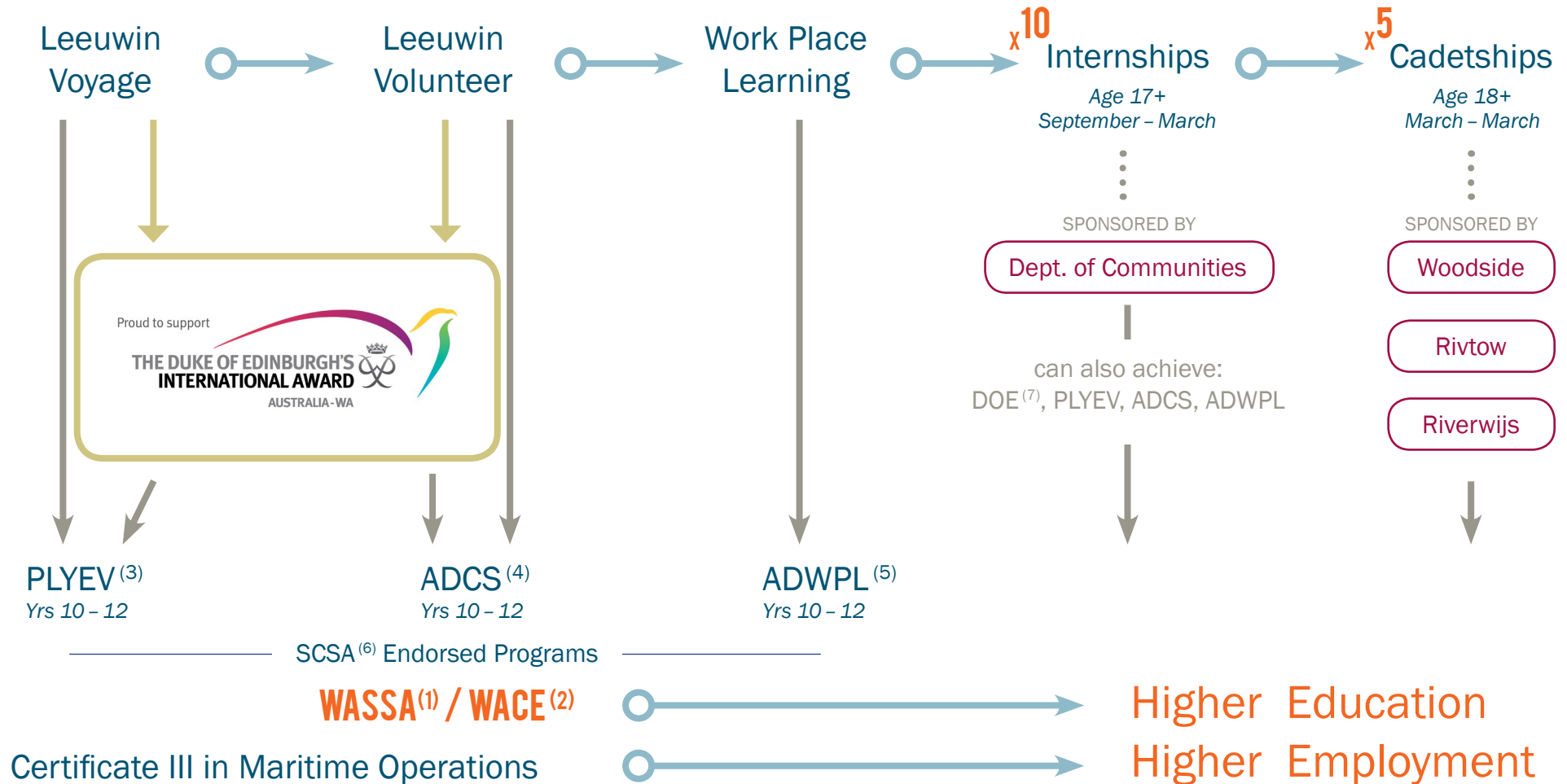


EDUCATION PATHWAY Secondary + Tertiary



(1) WASSA: Western Australian Statement of Student Achievement
 (2) WACE: Western Australian Certificate of Education
 (3) PLYEV: Provider Leeuwin Youth Explorer Voyage
 (4) ADCS: Authority Developed Community Service
 (5) ADWPL: Authority Developed Work Place Learning
 (6) SCSA: School Curriculum and Standards Authority
 (7) DOE: Duke of Edinburgh's International Awards

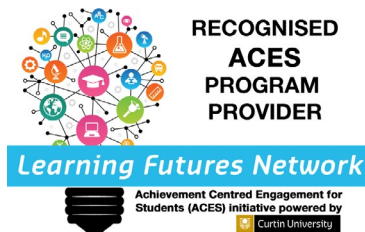


➔ (08) 9430 4105
SAILLEUWIN.COM

EDUCATION PATHWAY

Sequence of achievement

1. Come on a Leeuwin voyage to gain recognition on the WASSA⁽¹⁾/ WACE⁽²⁾ for years 10 to 12 (aged 14+) via the SCSA⁽⁶⁾ Endorsed Program PLYEV⁽³⁾ when you receive the Certificate of Achievement and complete the trainee manual.
2. Return as a Leeuwin volunteer and complete the logbook provided by the school to receive WASSA⁽¹⁾/ WACE⁽²⁾ recognition for years 10 to 12 (aged 14+) via the SCSA⁽⁶⁾ Endorsed Program ADCS⁽⁴⁾
3. During the annual refit of the ship, STS Leeuwin II, apply to participate and complete the logbook provided by the school to receive WASSA⁽¹⁾/ WACE⁽²⁾ recognition for years 10 to 12 (aged 14+) via the SCSA⁽⁶⁾ Endorsed Program ADWPL⁽⁵⁾.
4. Apply for one of the ten Internships (students may achieve the PLYEV⁽³⁾, ADCS⁽⁴⁾ and the ADWPL⁽⁵⁾ if eligible) sailleuwin.com/about-us/volunteer/
5. Duke of Edinburgh's International Awards can be achieved for Bronze, Silver and Gold Award levels.
6. Apply for one of the five Leeuwin Cadetship positions sailleuwin.com/about-us/marine-careers/



➡ (08) 9430 4105

SAILLEUWIN.COM